

WilloWare's WaspLink acts as an intermediary between Microsoft Dynamics GP and Wasp Labeler from Wasp Barcode Technologies. All three pieces of software must be installed on the same computer, along with a barcode label printer.

WaspLink is designed to work with Wasp Barcode Technologies software and hardware, and was tested in that configuration. Other label printing software, such as Bartender from Seagull Scientific, and Zebra printers will also work.

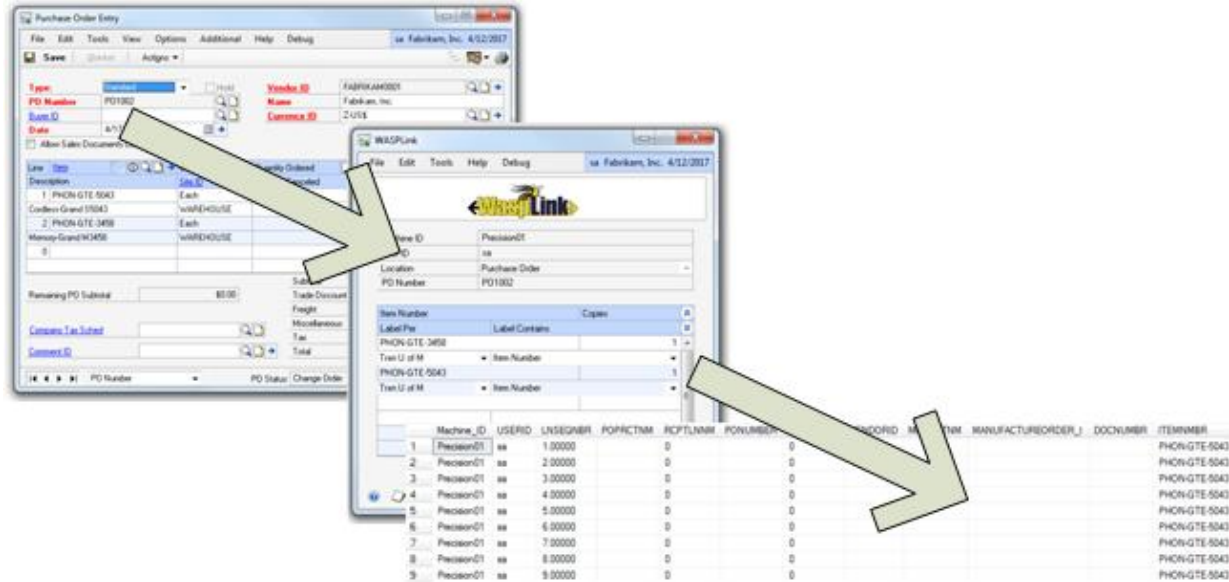
Wasp Barcode Technologies: www.WaspBarcode.com

Seagull Scientific: www.seagullscientific.com

Zebra: www.zebra.com

In addition to WaspLink from WilloWare you must also purchase:

- Wasp Labeler software, or another alternative
- A Barcode label printer (a roll printer is strongly recommended)



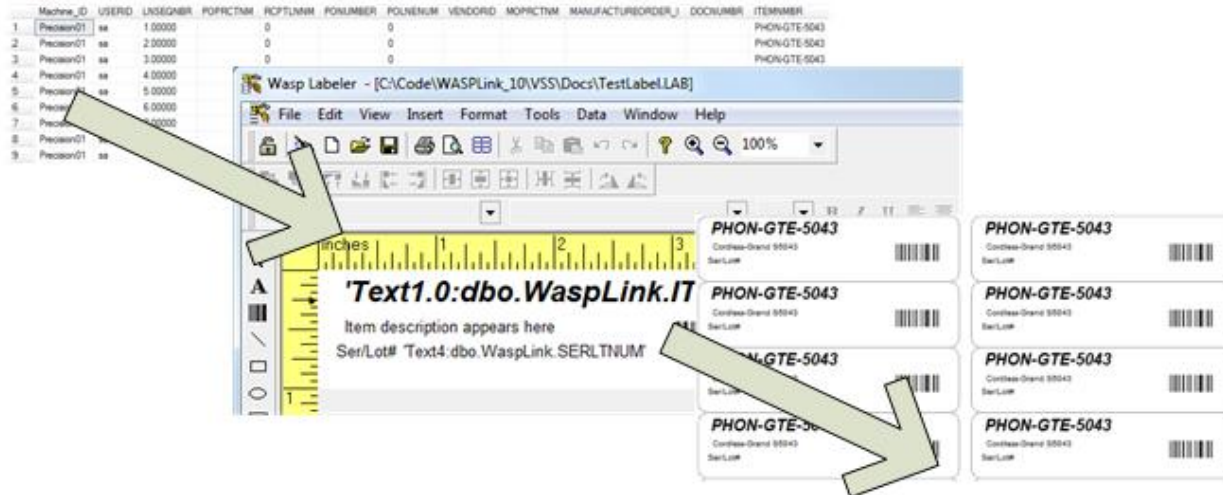
WaspLink supports printing barcode labels for inventory items from many places in GP, such as:

- Purchase Order Entry & PO Receipt
- Manufacturing Order & MO Receipt
- Inventory Adjustment & Transaction
- Item Maintenance & Item Inquiry
- SmartList

WaspLink reads the inventory items from the transaction, such as a Purchase Order, then provides several options for how to generate the labels. For example, you may choose to generate one label per Base Unit of Measure on the Purchase Order.

WaspLink collects data from several places in GP to create the labels. If labels are being printed from a PO Receipt, WaspLink may include data from the PO, PO Receipt, PO Receipt Lines, PO Serial Lot table, Item Master, and so on. One record per label is created and sent to the WaspLink table in the SQL database.

Regardless of the location in GP from which labels are printed, the generated labels are always sent to the same WaspLink table. This greatly simplifies creating the label report in Wasp Labeler, allowing a single report to be created for all labels, regardless of the source data in GP. Without WaspLink a separate label report would be need for printing from Purchase Orders, PO Receipts, MO Receipts, and so on.



After sending the generated labels to the WaspLink table, WaspLink launches the Wasp Labeler software.

The WaspLink table contains a column for Machine ID (computer name), and User ID (GP user id). If labels are printed by multiple users from different workstations, the label report must contain a restriction by either Machine ID or User ID. When the labels are printed, Wasp Labeler will only pull records from the WaspLink table that belong to the specified User ID (or were generated on a particular computer). If only one workstation is used to print labels, no restriction should be used.

Wasp Labeler pulls data for the barcode labels from the WaspLink table. Since WaspLink has done the work of collecting all the needed data into one record in one table, no complicated table linking is required when building the label report in Wasp Labeler.

Multiple label formats are supported in Wasp Label, from the standard Avery sheet, to complex packaging labels with graphics and multi-direction text.

Frequently Asked Questions

Will the server need to be restarted?

No. WaspLink, Wasp Labeler (or other label printing software), and Label Printer drivers can all be installed only on the computer that will print labels.

Wasp Labeler may require a computer restart depending on your Windows configuration.

The label printer drivers may also require a computer restart.

If the software is installed on your server, such as in a Terminal Services or Citrix environment, you will need to restart the server.

Do all GP Clients need to be updated?

No. WaspLink and the other required software can be installed only on the computer (or computers) that will be used to print labels.

Which version of Wasp Labeler do I need?

WaspLink is not dependent on the Wasp Labeler version.

When I print labels I see labels generated by a different user, what does this happen?

If multiple users are printing labels from different GP Clients, you must have a separate label report (*.lab file) for each GP Client or for each User ID. The label report must have a restriction by Computer Name or User ID. When WaspLink generates labels into the WaspLink table, the Computer Name and User ID columns will be populated automatically. The label report must be created so that it pulls only the labels for the specific Computer or User.

Do I need to specify a label report for every item number?

No. The simplest setup is to specify a label report per GP Location (such as Purchase Orders, or Purchase Receipts). When WaspLink runs it checks to see if there is a specific label per Item Number, and if not, it checks for a label specified at the User, and lastly, it will check for a label at the Machine level (as shown below).

Machine ID	Location	User ID	Item Number
Label File			
Precision01	PO Receipt - OPEN		
C:\Code\WASPLink_90\WSS\Docs\BarCode.LAB			

If one PC will be used to print labels, this is the easiest configuration to set up. Since the Machine ID will default to the current computer's name, setup is best done from each machine as you set up Wasp Labeler.